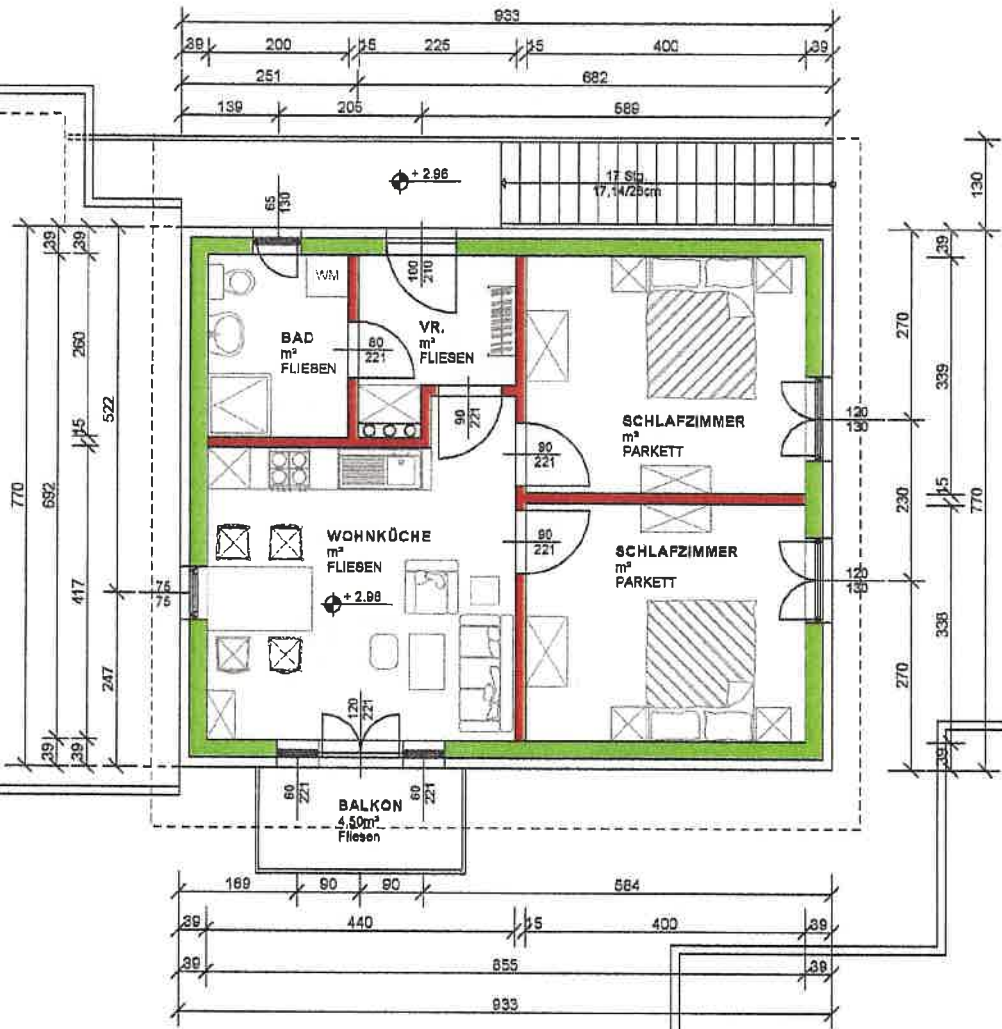
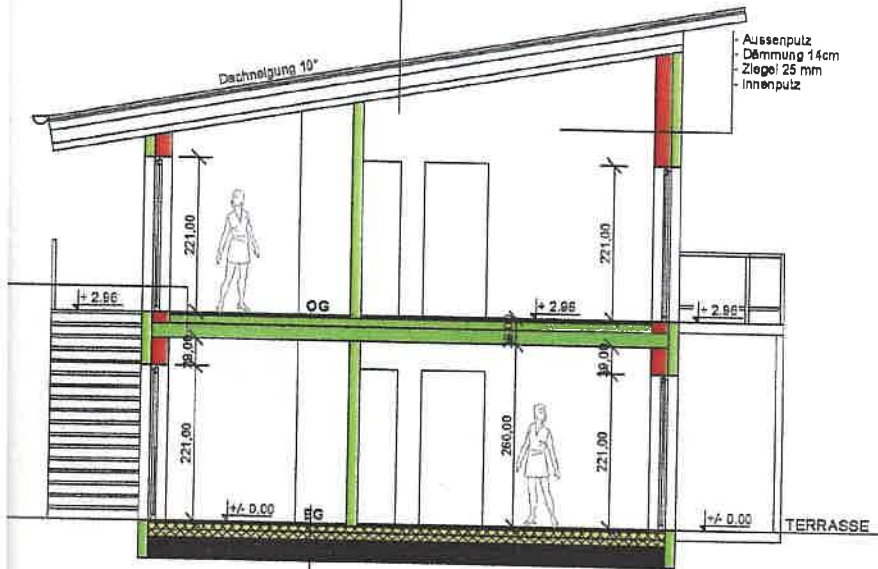


SAT



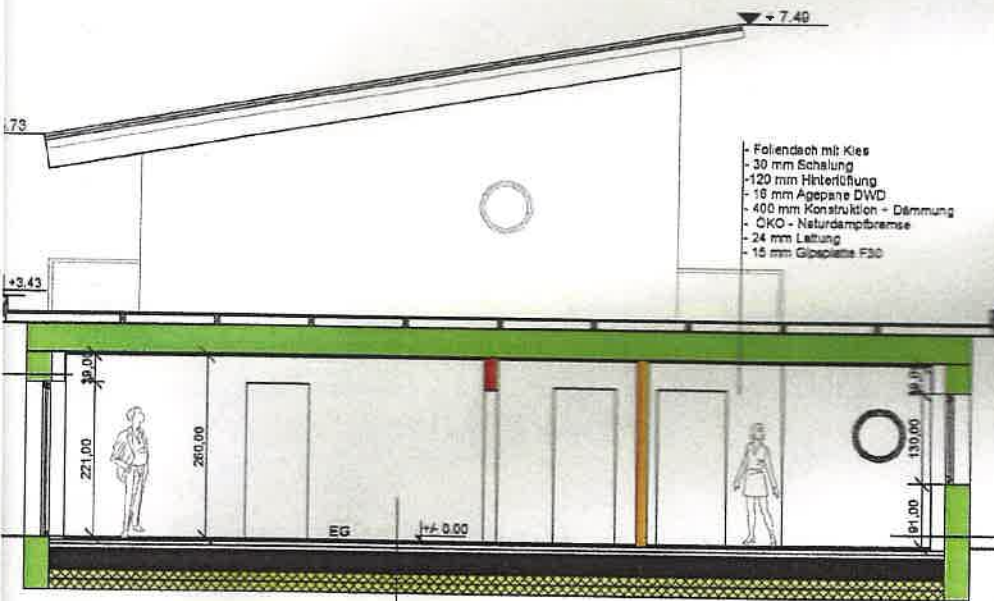
- Blechdeckung
- Schalung 30mm
- Hinterlüftung 100mm
- Schalungsbohn
- Schalung 18mm
- Sperren 200mm
- Aufdopplung 100mm DÄM 300mm
- Dampfbremse
- Sparschalung 24mm
- Gipskerenplatte 15mm

- Außenputz
- Dämmung 14cm
- Ziegel 25 mm
- Innenputz



SCHNITT B - B

- 20mm Bodenbelag
- 20mm Verlegesplatten
- 200mm Dämmung
- Horizontalsolierung
- 300mm Stahlbeton
- 150mm Röllung



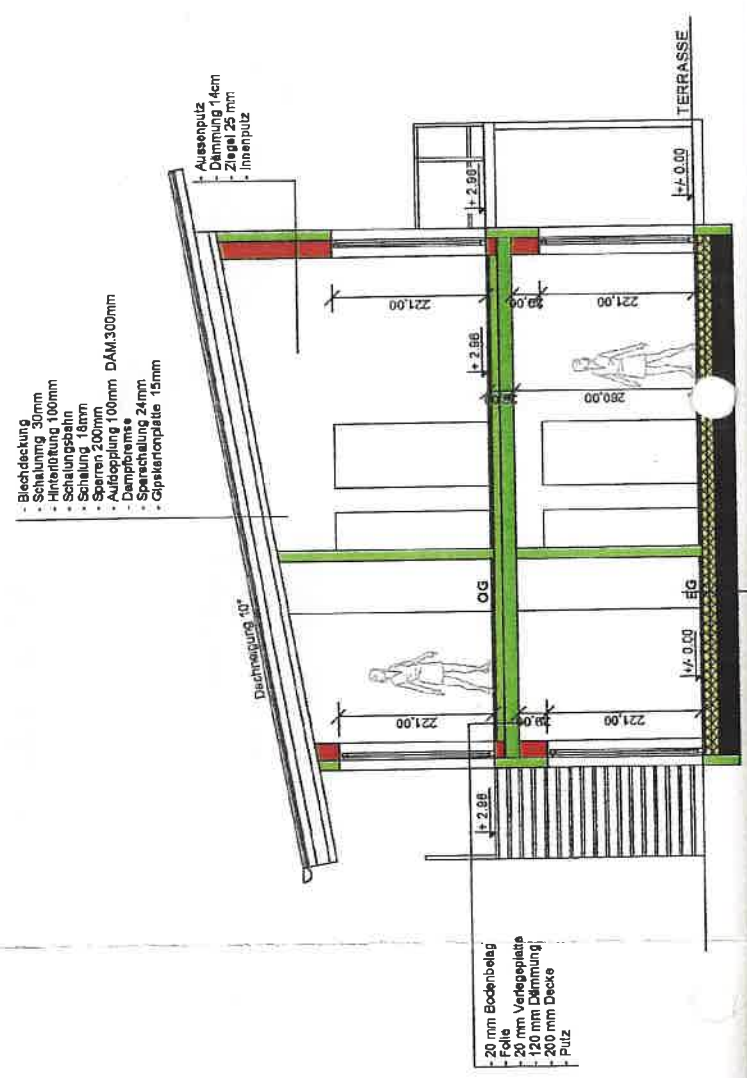
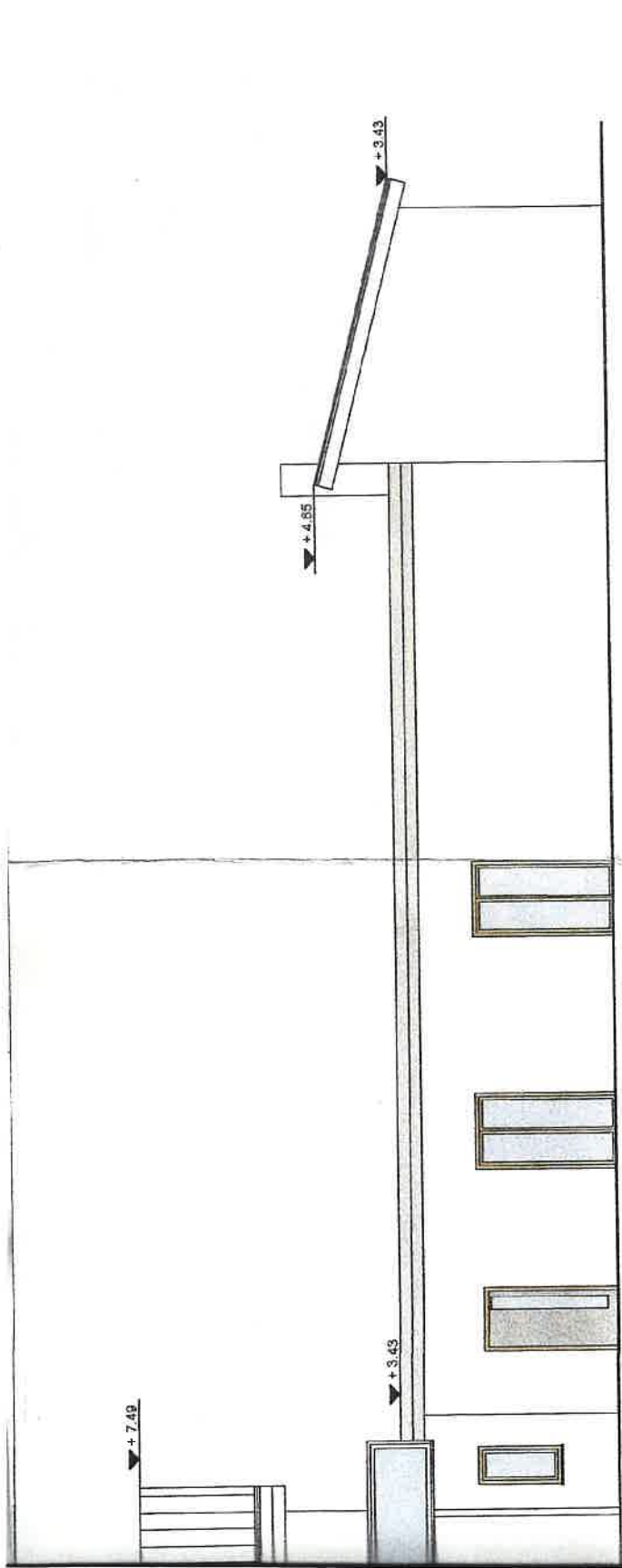
- Foliedach mit Kies
- 30 mm Schalung
- 120 mm Hinterlüftung
- 18 mm Agepane DWD
- 400 mm Konstruktion - Dämmung
- OKO - Naturdampfbremse
- 24 mm Lattung
- 15 mm Gipsplatte F30

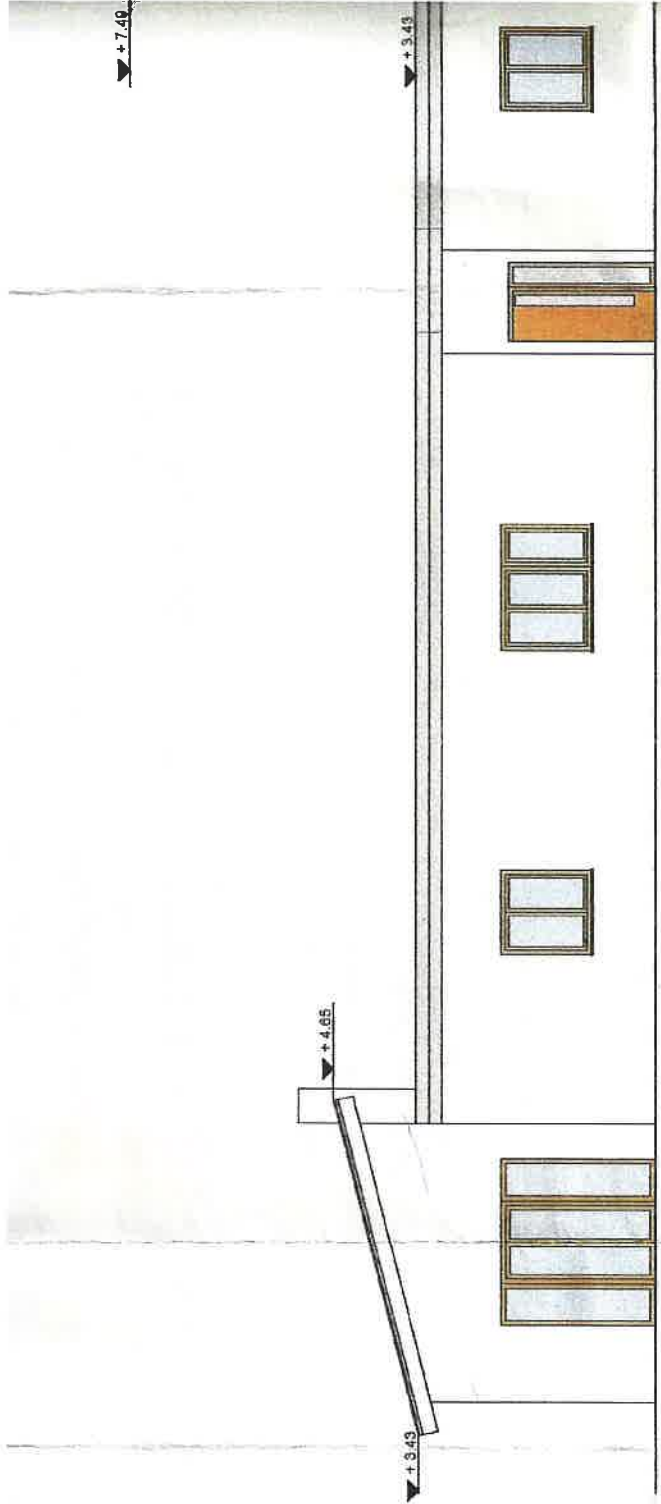
- KD-Strukturputz
- Pulverleber 190
- PS-Fassendämmplatte(EPS-F) 35 cm
- Pulverleber 190
- Wienerberger 18 cm
- Meshnenputz

SCHNITT A - A

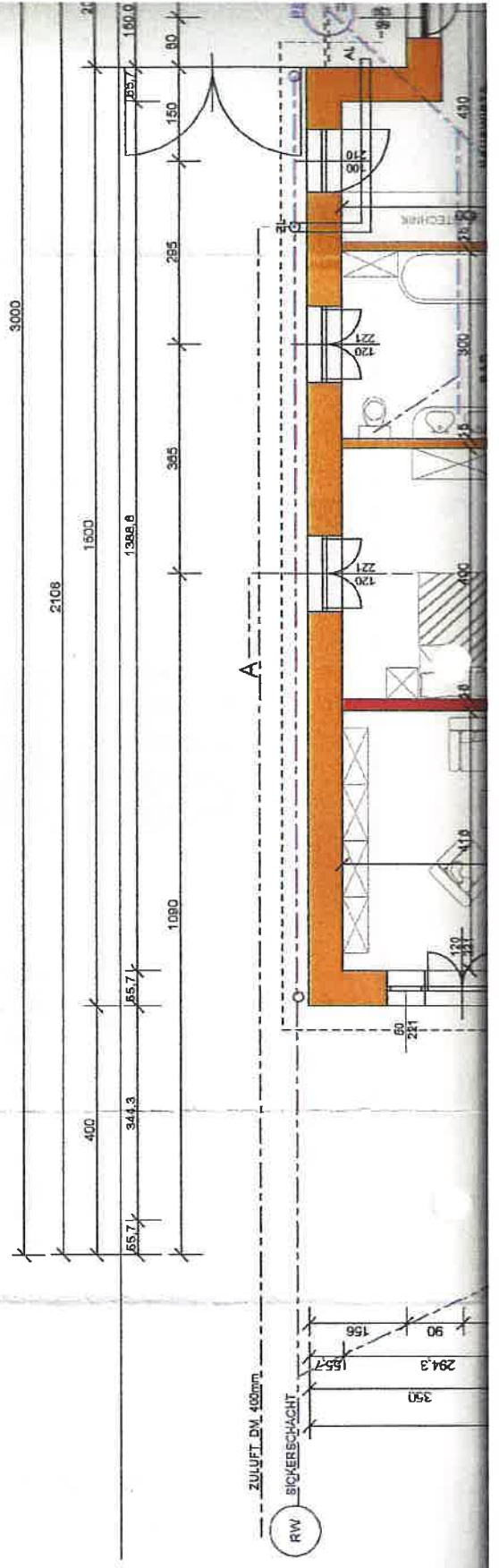
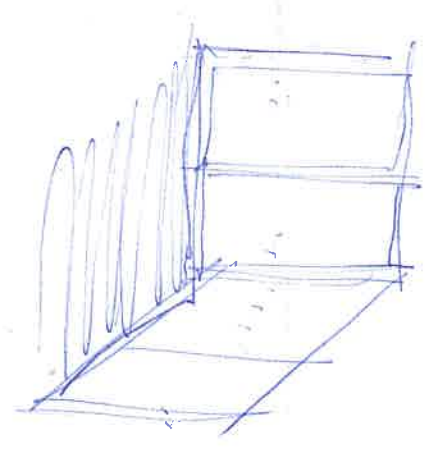
- 20mm Bodenbelag
- 20mm Verlegesplatten
- 60 mm Zellulosedämmung
- 60 mm Perleddämmung
- Horizontalsolierung
- 300 mm Stahlbetonfundamentplatte
- 280 mm XPS
- 50 mm Sauberkeitsschicht

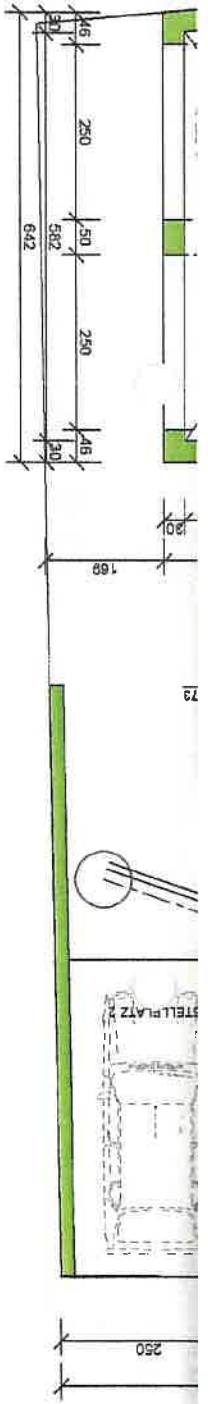
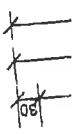
+/- 0.00 = 226,90 m ü. A.



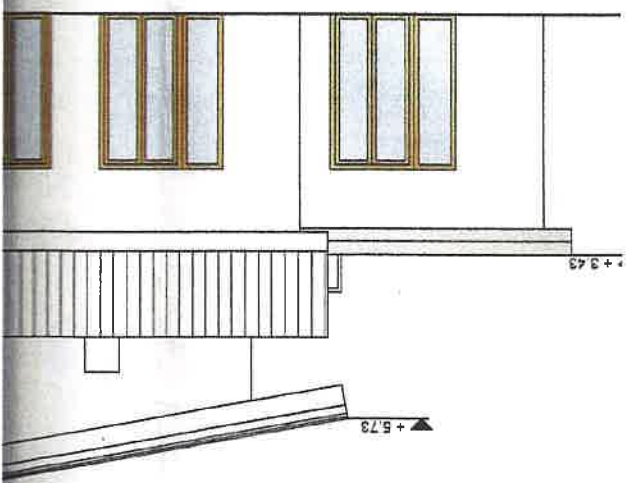


SÜDANSICHT

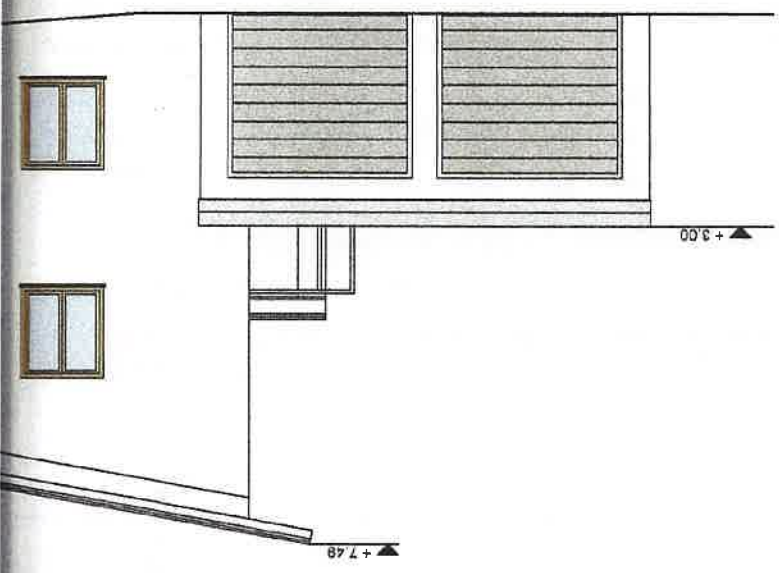




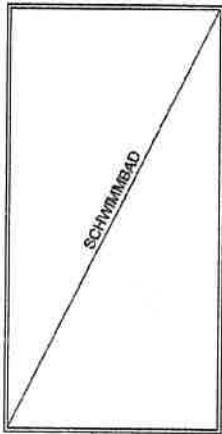
WESTANSICHT



OSTANSICHT



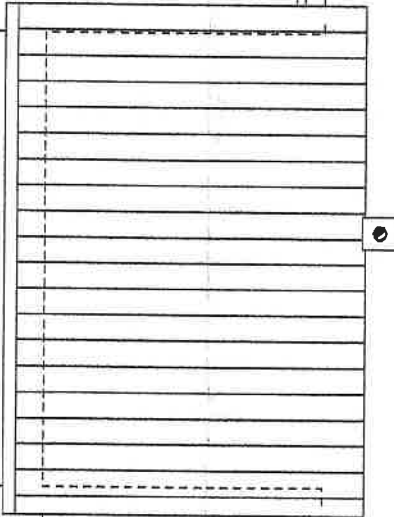
NORDANSICHT



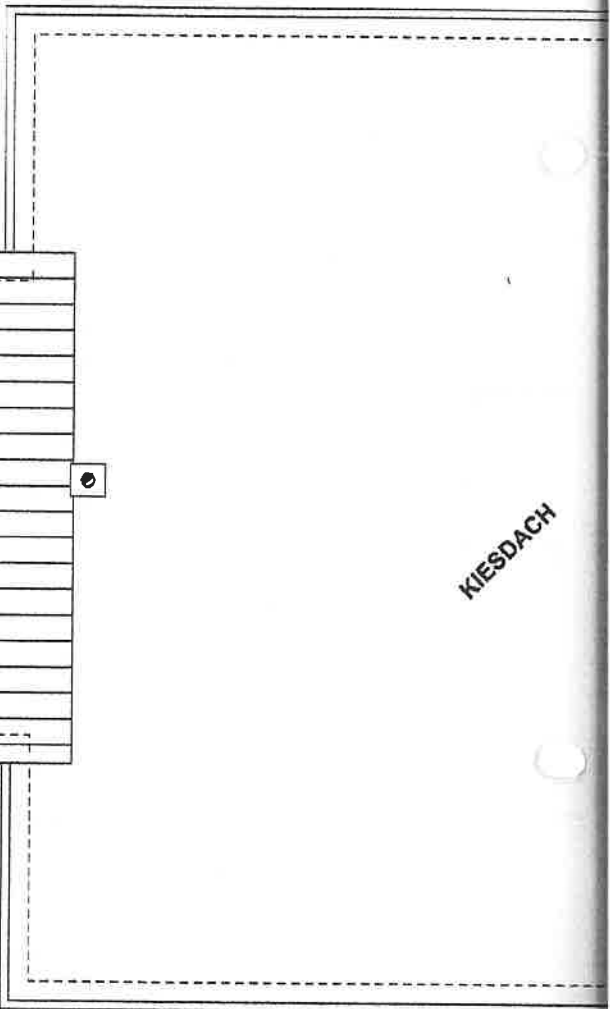
SCHWIMMBAD



TERRASSE



TERRASSE



KIESDACH

OBERGESCHOSS

STADTGEMEINDE
Langenlois
3550 Langenlois

5263/1

5264/1 Q

5265/1 Q

RUINER Harald
RUINER Monika
Am Schenkenbichl 9
3550 Langenlois

5265/2 Q

5265/3 Q

MÜLLAUER Heinz
Schützenweg 3
D- 62205 Gilching - Deutschland

13170

MAYER Peter
MAYER Sandra
Haindorferstr. 78/1/8
3550 Langenlois

5267/2

5267/3 Q

5268 LN

5269 LN

MARKEL Harald
MARKEL-SCHALK Doris
Am Schenkenbichl 5
3550 Langenlois

5267/1Q

WEG

181/2

.435/1

180 Q

.434

181/1Q