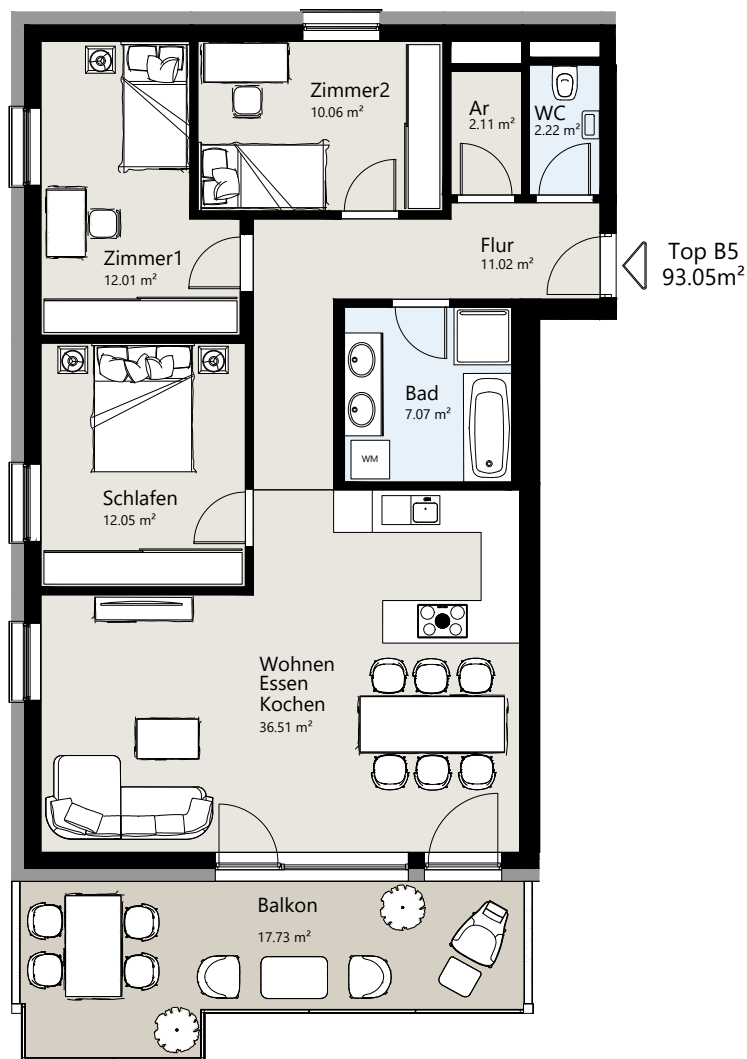


Doppl. Waldstraße

Top B5 1. OG

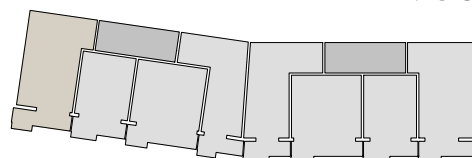
LEWOG
Wo das Leben
zu Hause ist.



Top B5

Zimmer	4
Wohnfläche	93.05 m²
Balkon/Terrasse	17.73 m²
Garten	-
Keller	7.20 m²
Tiefgaragenplätze	2

1. OG



0 1m 2m 3m 4m 5m