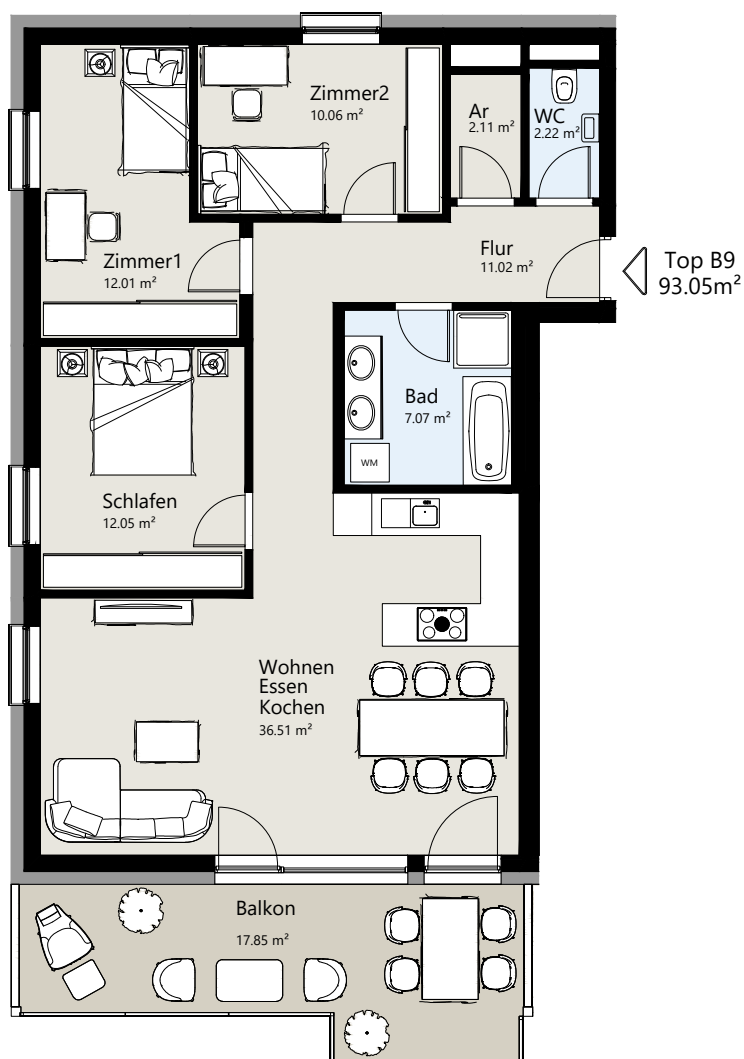


Doppl. Waldstraße

Top B9 2. OG

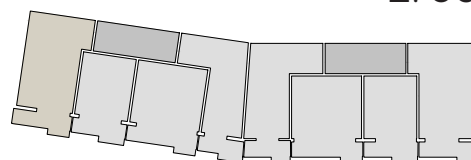
LEWOG
Wo das Leben
zu Hause ist.



Top B9

Zimmer	4
Wohnfläche	93.05 m ²
Balkon/Terrasse	17.85 m ²
Garten	-
Keller	6.84 m ²
Tiefgaragenplätze	2

2. OG



0 1m 2m 3m 4m 5m